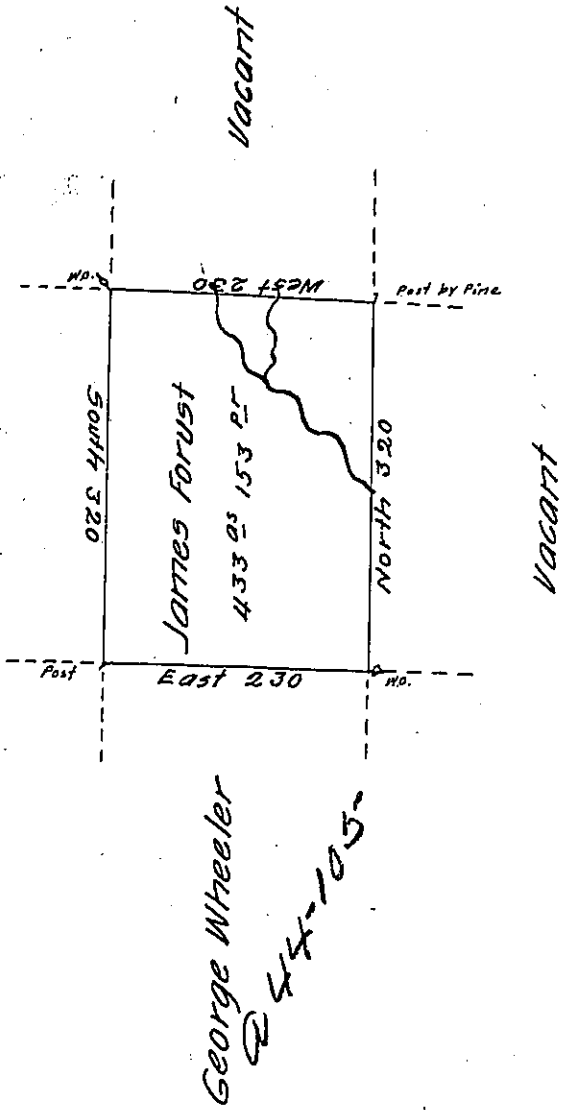


18160

Saml Forust



Situate in Mifflin County Upper Bald Eagle Township on the waters of Beech Creek containing Four Hundred thirty three acres one Hundred and fifty three perches and the usual allowance for Roads. Surveyed the 12th July 1792. In pursuance of a Warrant dated 3 day of July 1792.

Jo. J. Wallis D.S.

Daniel Broadhead Esq^r S.G.

IN TESTIMONY that the above is a copy of the original remaining on file in the Department of Internal Affairs of Pennsylvania, made conformably to an Act of Assembly approved the 16th day of February, 1833, I have hereunto set my Hand and caused the Seal of said Department to be affixed at Harrisburg, this sixth day of December 1904

Joac B. Brown
Secretary of Internal Affairs.